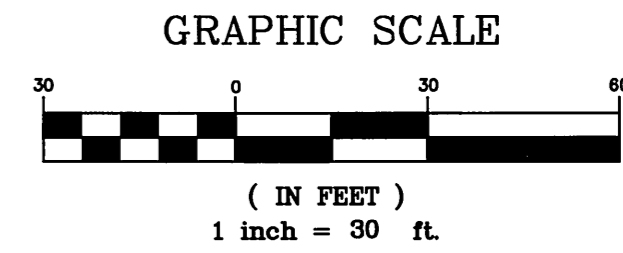
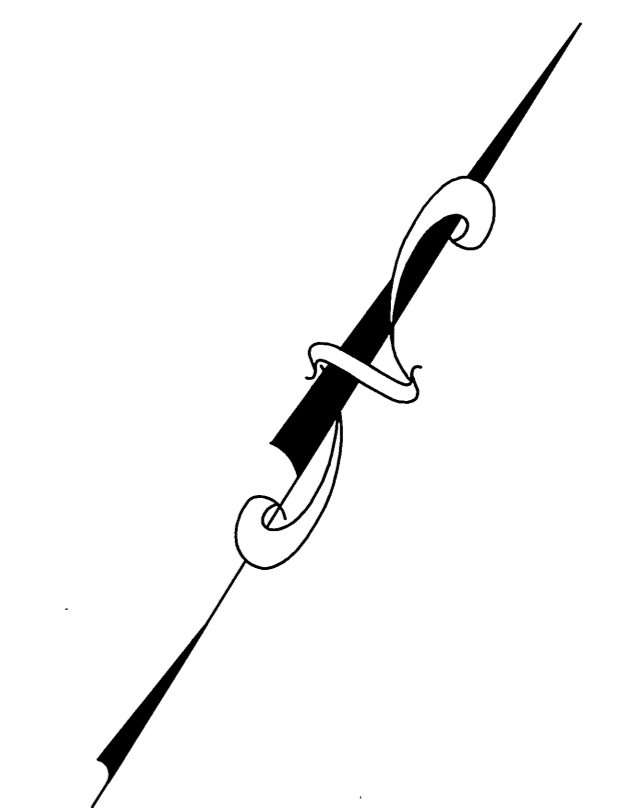
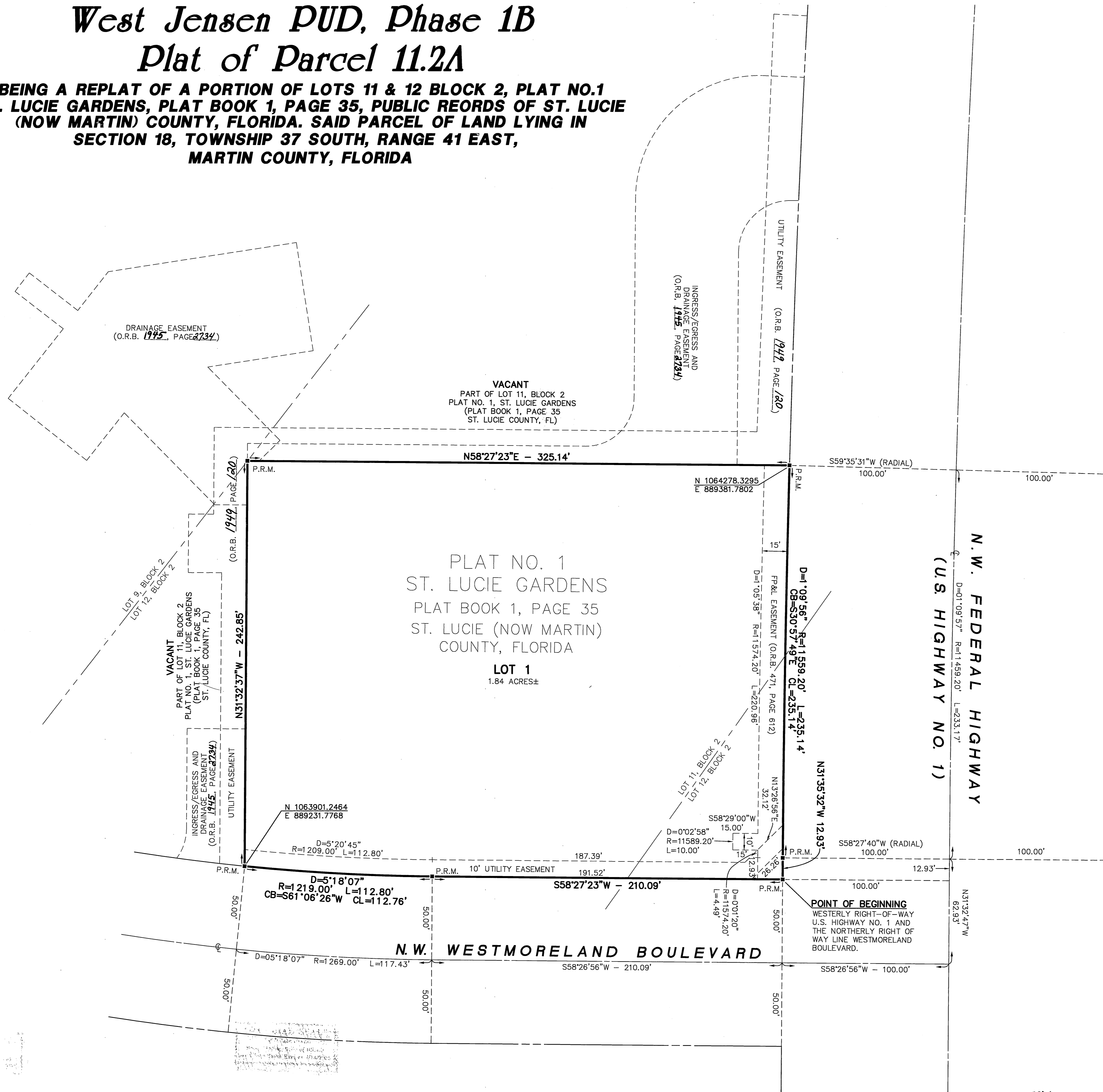


West Jensen PUD, Phase 1B Plat of Parcel 11.2A

BEING A REPLAT OF A PORTION OF LOTS 11 & 12 BLOCK 2, PLAT NO.1
ST. LUCIE GARDENS, PLAT BOOK 1, PAGE 35, PUBLIC RECORDS OF ST. LUCIE
(NOW MARTIN) COUNTY, FLORIDA. SAID PARCEL OF LAND LYING IN
SECTION 18, TOWNSHIP 37 SOUTH, RANGE 41 EAST,
MARTIN COUNTY, FLORIDA



LEGEND

- O.R.B. = OFFICIAL RECORD BOOK
- D = DELTA (CENTRAL ANGLE)
- R = RADIUS
- L = ARC LENGTH
- CB = CHORD BEARING
- CL = CHORD LENGTH
- C.M. = CONCRETE MONUMENT
- FP&L = FLORIDA POWER AND LIGHT
- P.R.M. = PERMANENT REFERENCE MONUMENT
- LB = LICENSED BUSINESS
- RLS = REGISTERED LAND SURVEYOR
- PSM = PROFESSIONAL SURVEYOR AND MAPPER
- ☉ = CENTERLINE
- = SET PERMANENT REFERENCE MONUMENT (P.R.M.)
4"x4" CONCRETE MONUMENT WITH DISK LABELED
"GCY, INC. LB 4108, PRM PSM 4864"

- SURVEYOR'S NOTES**
- 1) ALL BEARINGS SHOWN HEREON ARE REFERENCED TO THE WESTERLY RIGHT-OF-WAY LINE OF U.S. HIGHWAY NO. 1, SAID LINE HAVING A BEARING OF SOUTH 31°32'47" EAST AND ARE REFERENCED TO THE FLORIDA STATE PLANE COORDINATE SYSTEM, FLORIDA EAST ZONE, NORTH AMERICAN DATUM OF 1983, ADJUSTMENT OF 1990.
 - 2) ALL COORDINATES SHOWN HEREON ARE REFERENCED TO THE FLORIDA STATE PLANE COORDINATE SYSTEM, FLORIDA EAST ZONE, NORTH AMERICAN DATUM OF 1983, ADJUSTMENT OF 1990.
 - 3) THERE SHALL BE NO BUILDINGS OR ANY OTHER KIND OF CONSTRUCTION OR TREES OR SHRUBS PLACED ON DRAINAGE EASEMENTS OR UTILITY EASEMENTS.
 - 4) THIS PLAT, AS RECORDED IN ITS ORIGINAL FORM IN THE PUBLIC RECORDS, IS THE OFFICIAL DEPICTION OF THE SUBDIVIDED LANDS DESCRIBED HEREON AND WILL IN NO CIRCUMSTANCES BE SUPPLANTED IN AUTHORITY BY ANY OTHER FORM OF THE PLAT, WHETHER GRAPHIC OR DIGITAL.
 - 5) THERE MAY BE ADDITIONAL RESTRICTIONS THAT ARE NOT RECORDED ON THIS PLAT THAT MAY BE FOUND IN THE PUBLIC RECORDS OF MARTIN COUNTY.

Job Number 03-1050-05-01
Licensed Business #4108

INCORPORATED
PROFESSIONAL SURVEYORS AND MAPPERS
CERTIFICATE OF AUTHORIZATION LB 4108

CORPORATE OFFICE: 1469 N. MONROE STREET, PALM CITY, FL 34991 (800) 386-1066
TALLAHASSEE OFFICE: 4909 N. MONROE STREET, TALLAHASSEE, FL 32303 (850) 536-8455